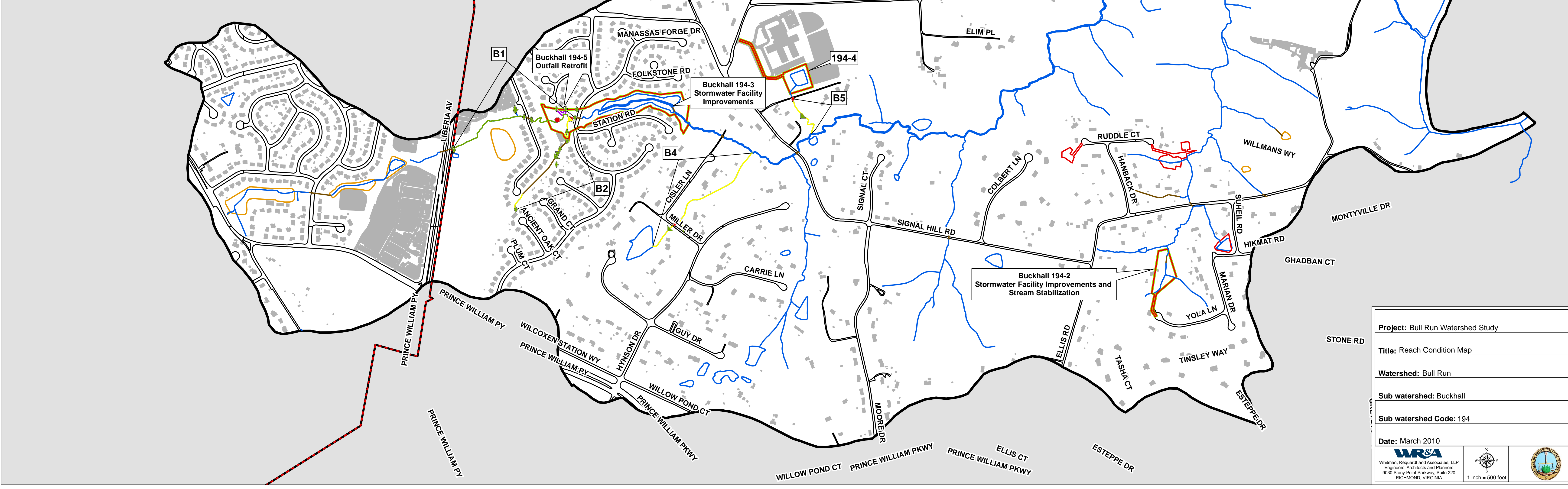
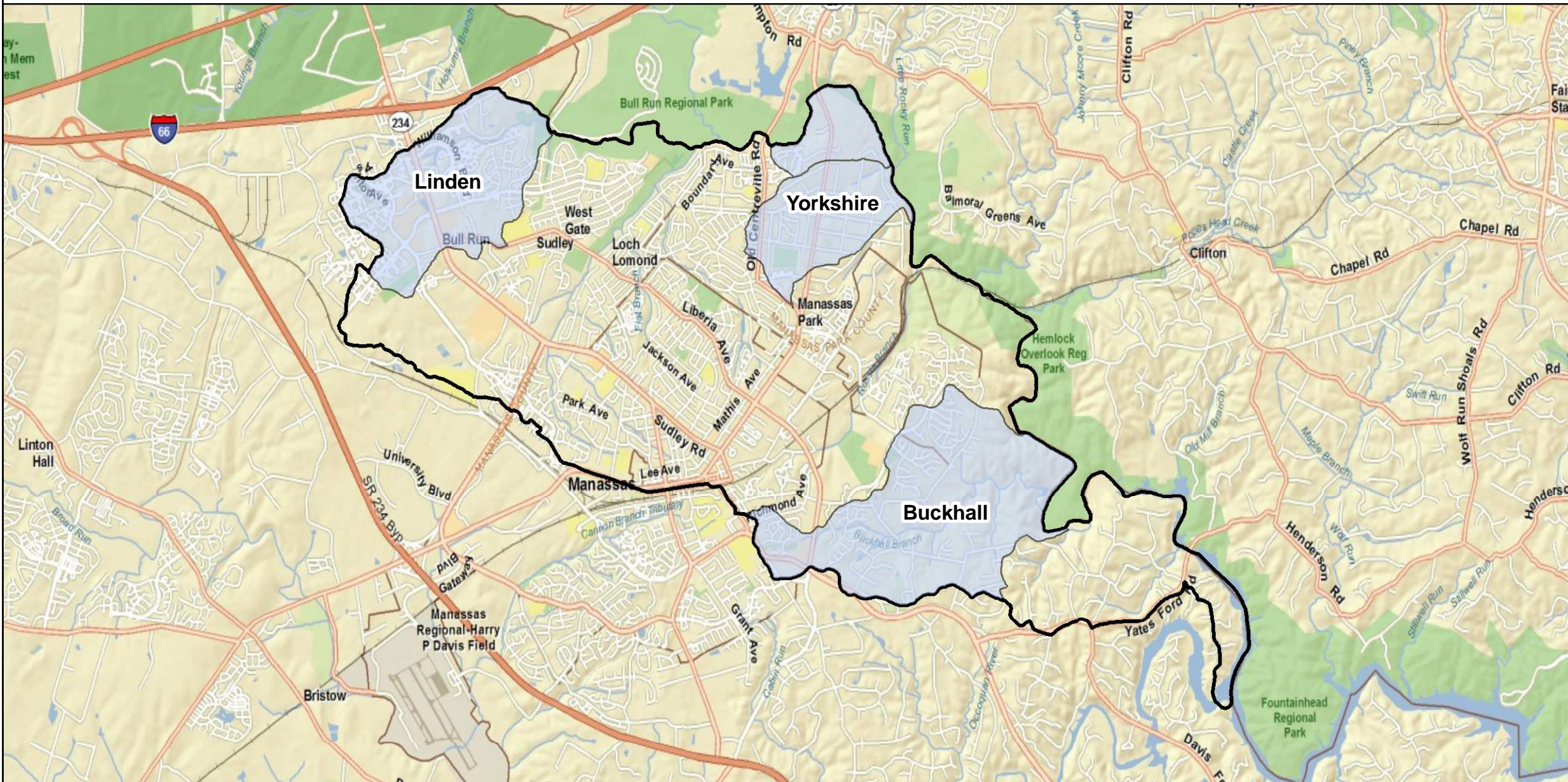


Legend

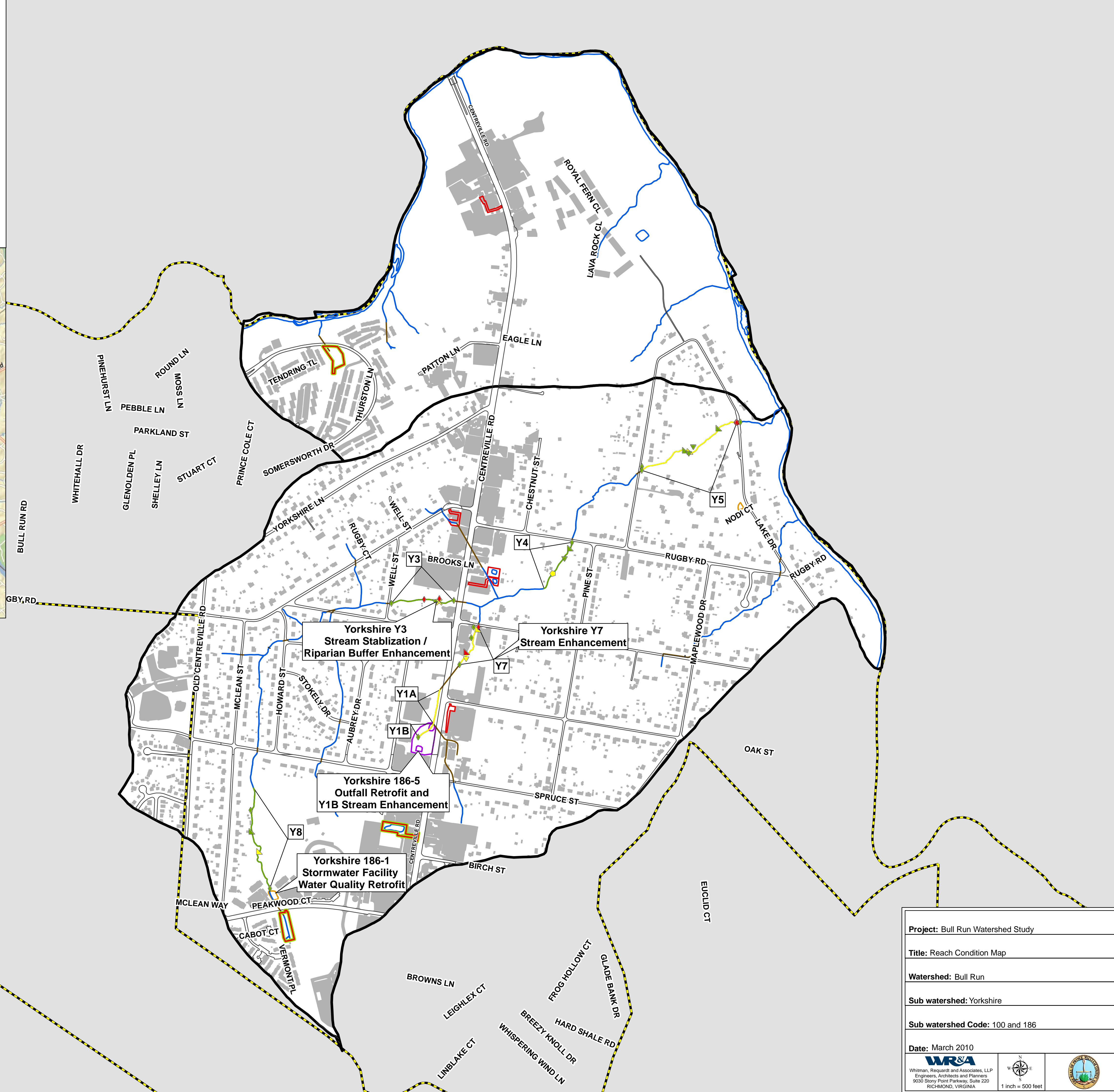
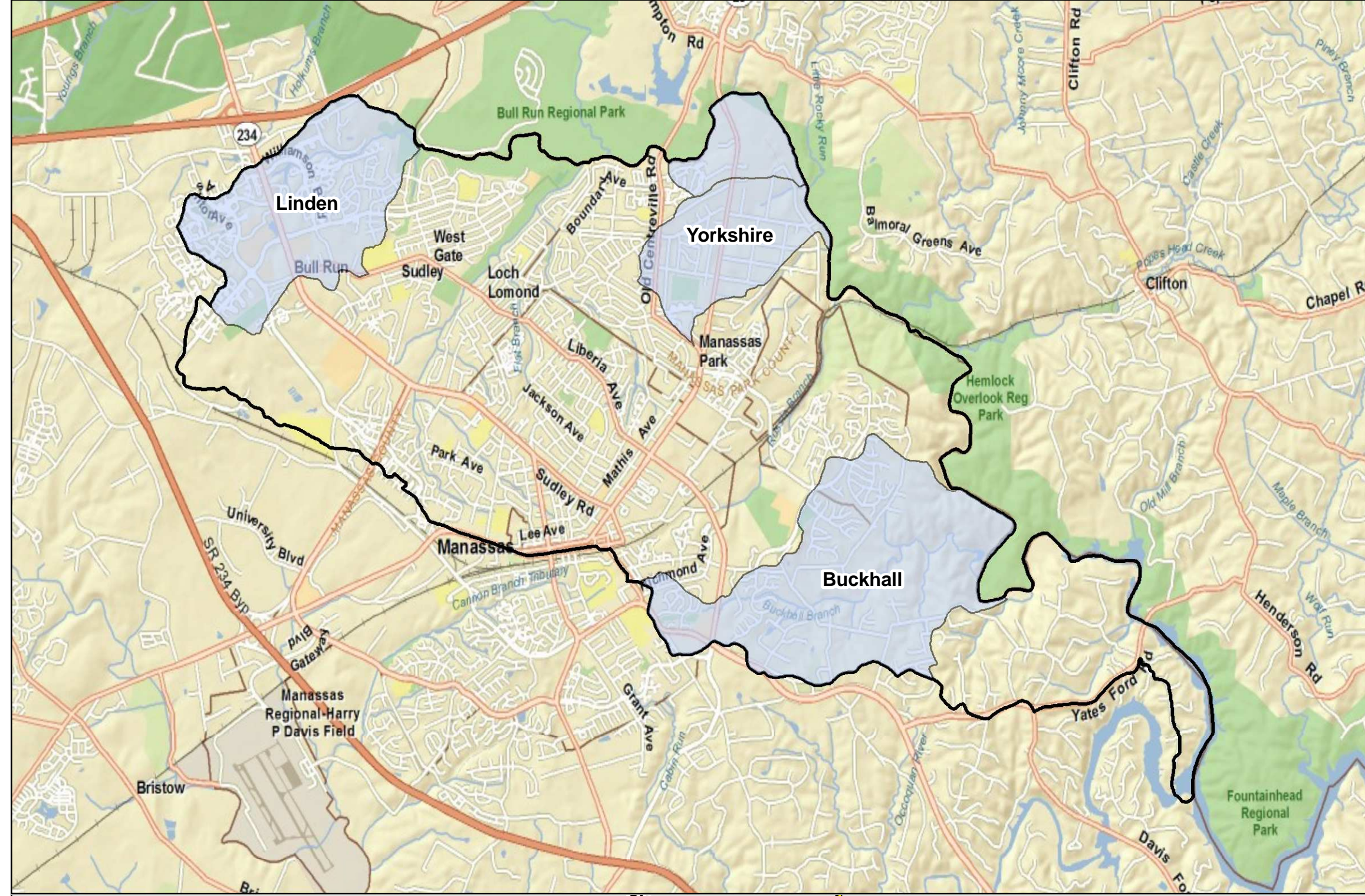
- | | | | |
|-----------------|-----------------|------------------------|--------------------------------|
| Outfalls | Trash | Obstruction | Buckhall Subwatershed Boundary |
| Minor | Minor | Minor | City of Manassas |
| Moderate | Moderate | Moderate | City of Manassas Park |
| Severe | Severe | Severe | BMP's In County Inventory |
| Utility | Headcuts | Reach Condition | Inventoried BMP's |
| Minor | Minor | Streams Not Evaluated | BMP's Not In County Inventory |
| Moderate | Moderate | Good | Potential Outfall Retrofit |
| Severe | Severe | Fair | Lakes/Ponds |
| | | Poor | Buckhall Buildings |
| | | | Culverts |
| | | | Roads |



Project: Bull Run Watershed Study
Title: Reach Condition Map
Watershed: Bull Run
Sub watershed: Buckhall
Sub watershed Code: 194
Date: March 2010
 Whitman, Research and Associates, LLP Engineers, Architects and Planners 9030 Stony Point Parkway, Suite 220 RICHMOND, VIRGINIA
 1 inch = 500 feet

Legend

Outfalls	Trash	Obstructions	Yorkshire Subwatershed Boundary
Minor	Minor	Minor	City of Manassas Park
Moderate	Moderate	Moderate	BMP's In County Inventory
Severe	Severe	Severe	Inventoried BMP's
Utility	Headcuts	Reach Condition	BMP's Not In County Inventory
Minor	Minor	Streams Not Evaluated	Potential Outfall Retrofit
Moderate	Moderate	Good	Lakes/Ponds
Severe	Severe	Fair	Bull Run Buildings
		Poor	Culverts
			Roads



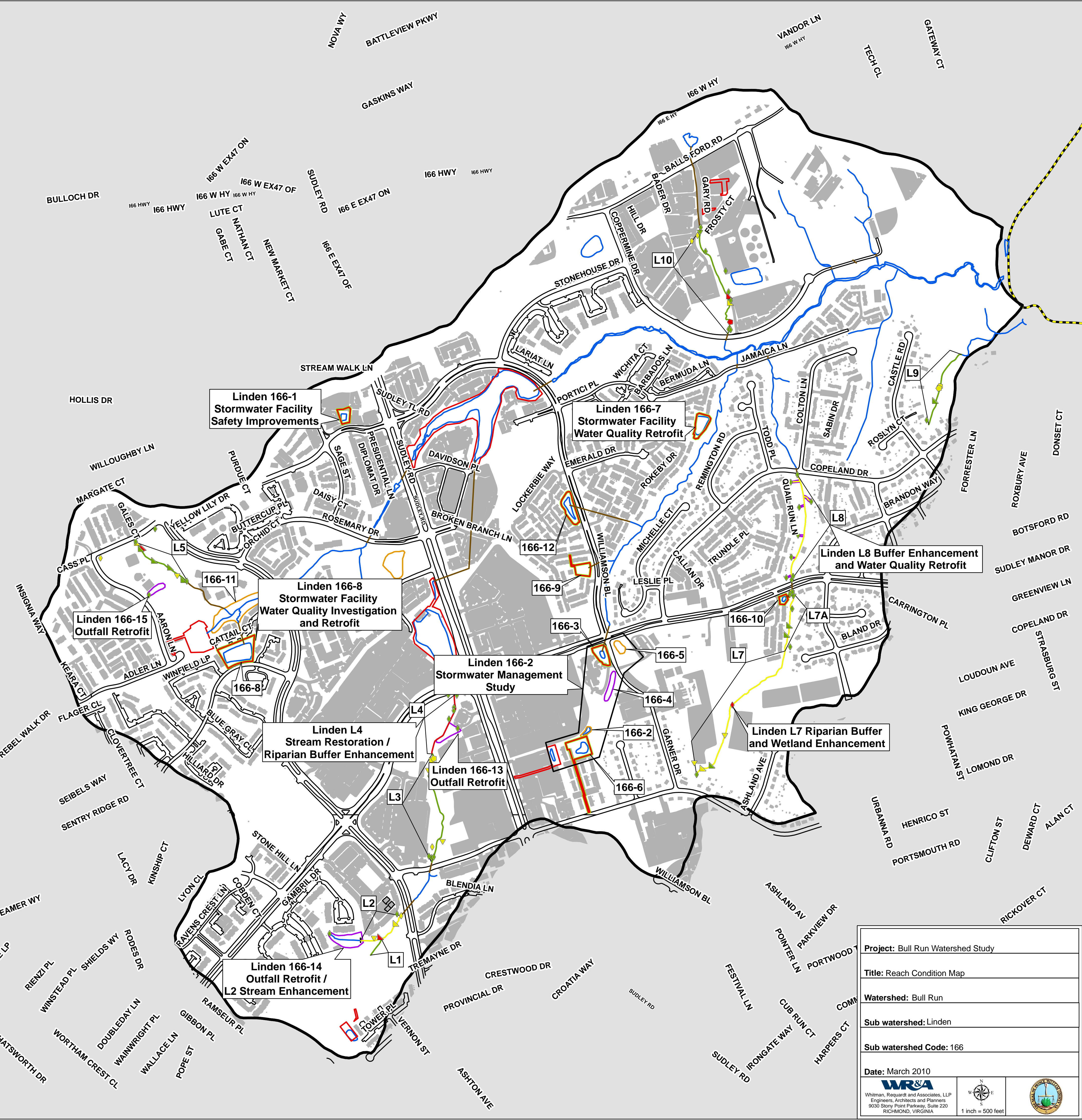
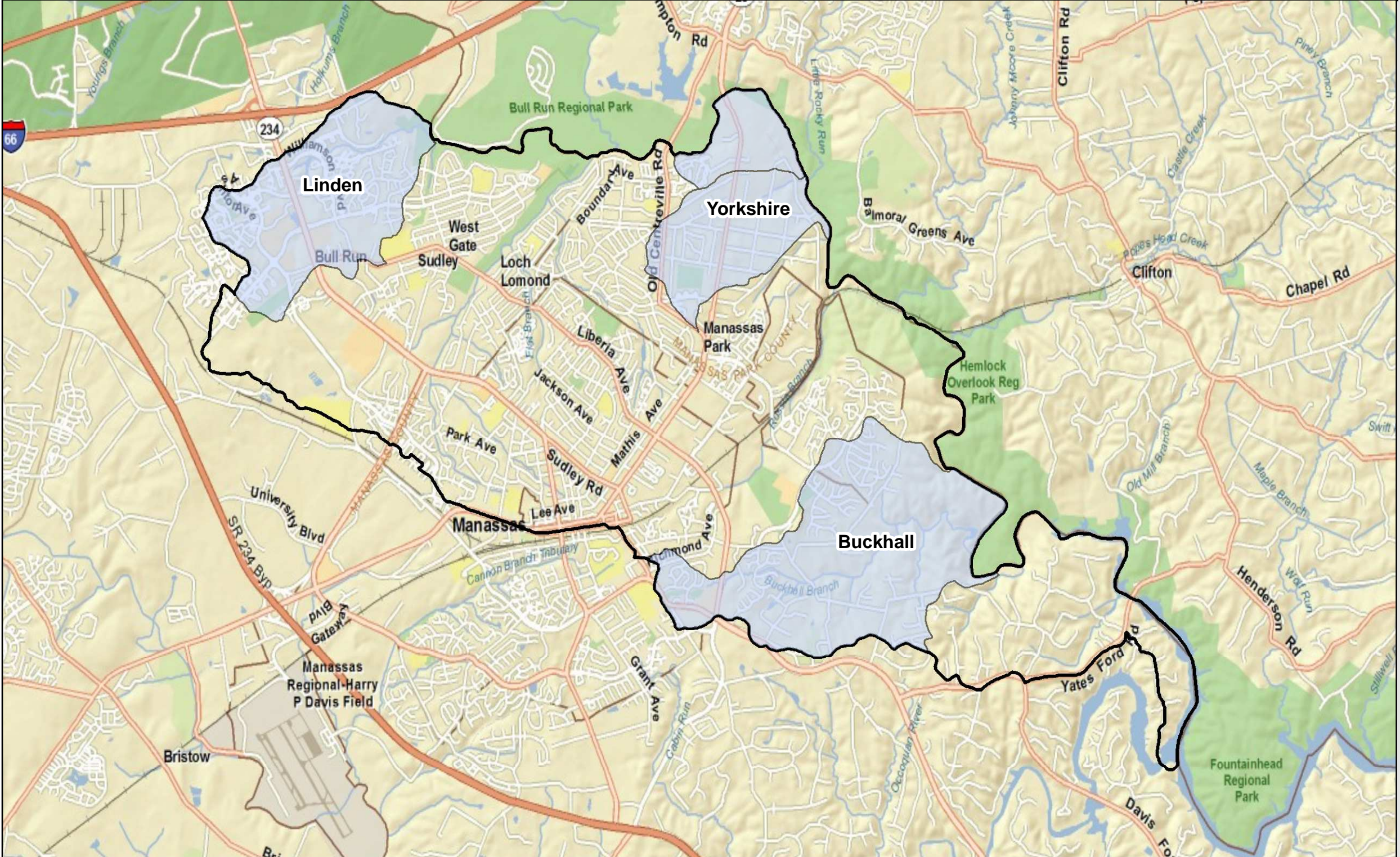
Project: Bull Run Watershed Study
Title: Reach Condition Map
Watershed: Bull Run
Sub watershed: Yorkshire
Sub watershed Code: 100 and 186
Date: March 2010

WRA
Whitman, Requardt and Associates, LLP
Engineers, Architects and Planners
9901 Story Point Parkway, Suite 220
RICHMOND, VIRGINIA

1 inch = 500 feet

Legend

- | | | | |
|-----------------|--------------------|------------------------|------------------------------|
| Outfalls | Obstruction | Reach Condition | Linden Subwatershed Boundary |
| Minor | Minor | Streams Not Evaluated | City of Manassas Park |
| Moderate | Moderate | Good | BMP's in County Inventory |
| Severe | Severe | Fair | Inventoried BMP's |
| Trash | Headcuts | Poor | Potential Outfall Retrofit |
| Minor | Minor | | Lakes/Ponds |
| Moderate | Moderate | | Linden Buildings |
| Severe | Severe | | Culverts |
| | | | Roads |



Project: Bull Run Watershed Study
Title: Reach Condition Map
Watershed: Bull Run
Sub watershed: Linden
Sub watershed Code: 166
Date: March 2010
 Whitman, Reardon and Associates, LLP Engineers, Architects and Planners 9030 Stony Point Parkway, Suite 220 RICHMOND, VIRGINIA
 1 inch = 500 feet