



PRINCE WILLIAM
COUNTY

Prince William County

Christopher E. Martino, County Executive



About Prince William County, Virginia

- Part of the National Capital Region
- Full Service Local Government
- Total Budget of \$3.4B
- ~4,725 FTE Employees
- Eight-Member Elected Board of County Supervisors
- Appointed County Executive



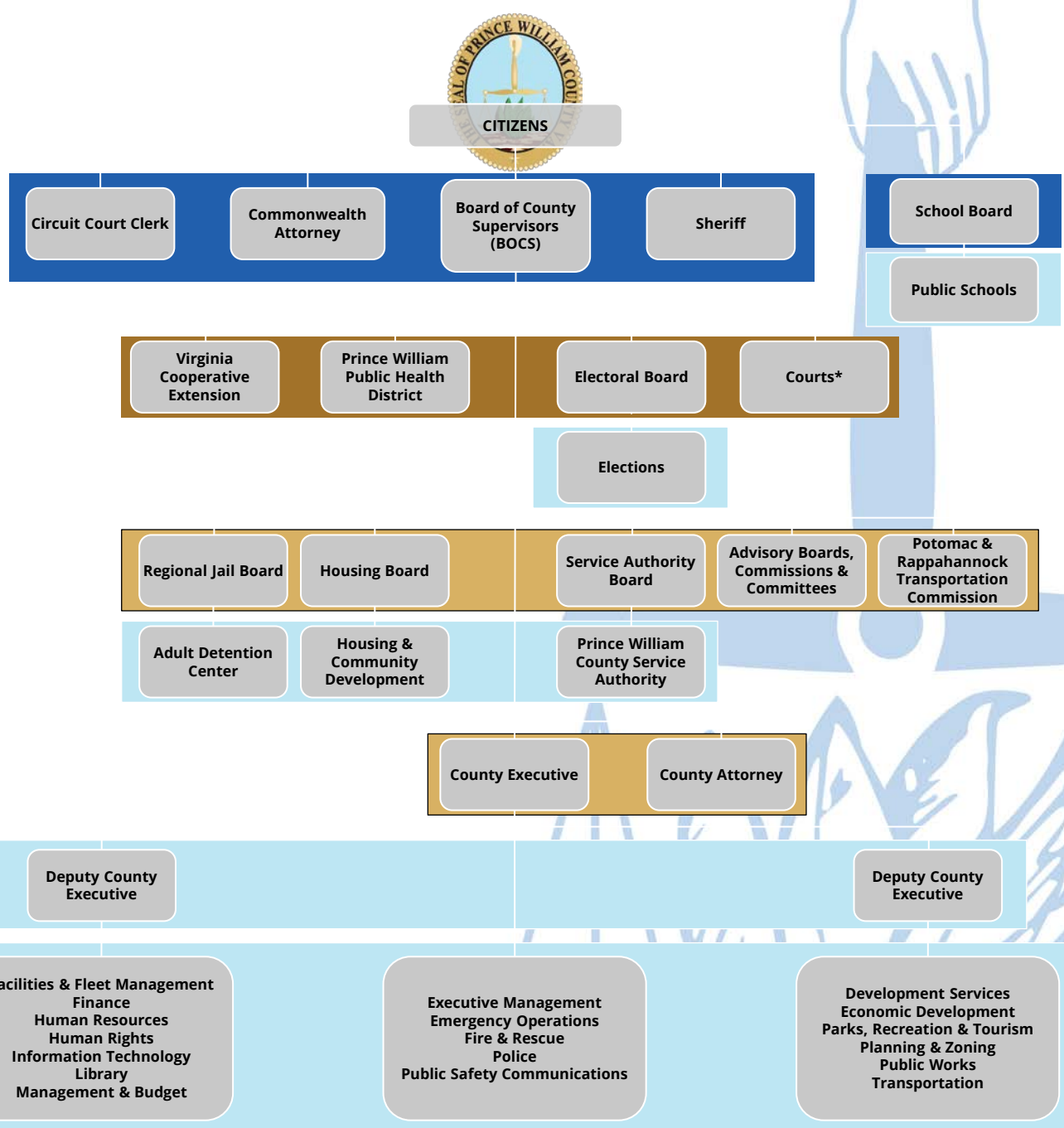
Organization Chart

Legend

- Elected Officials/Constitutional Officers
- State Agencies and Services
- Appointed by BOCS
- County Agencies and Departments

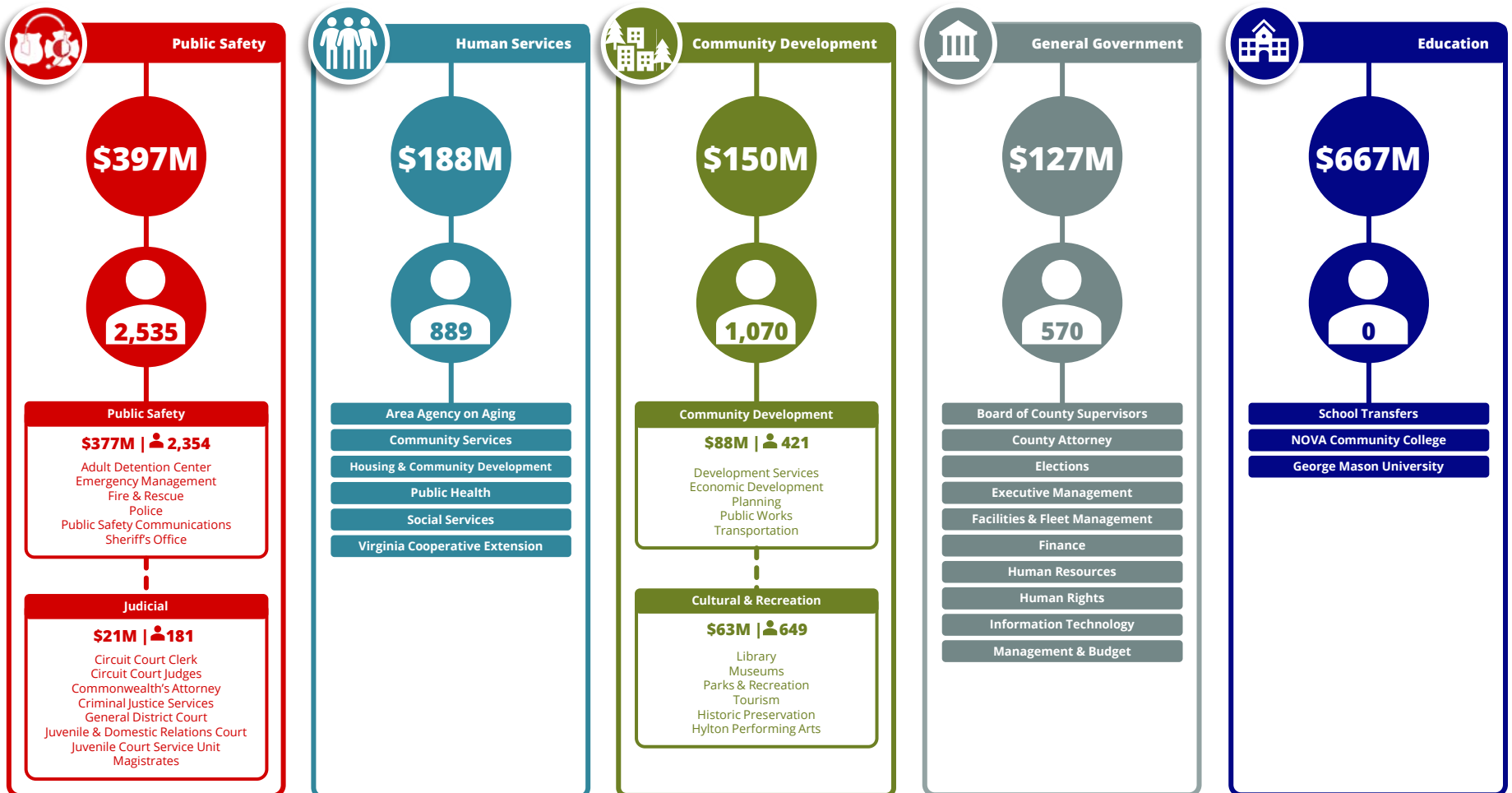
Notes:

- * Circuit Court Judges, General District Court, Juvenile & Domestic Relations Court, Juvenile Court Services, and Magistrates
- Dotted lines are state and local services not directly accountable to the BOCS



County Functional Areas

Proposed FY2022 Budget (All Funds) Functional Areas

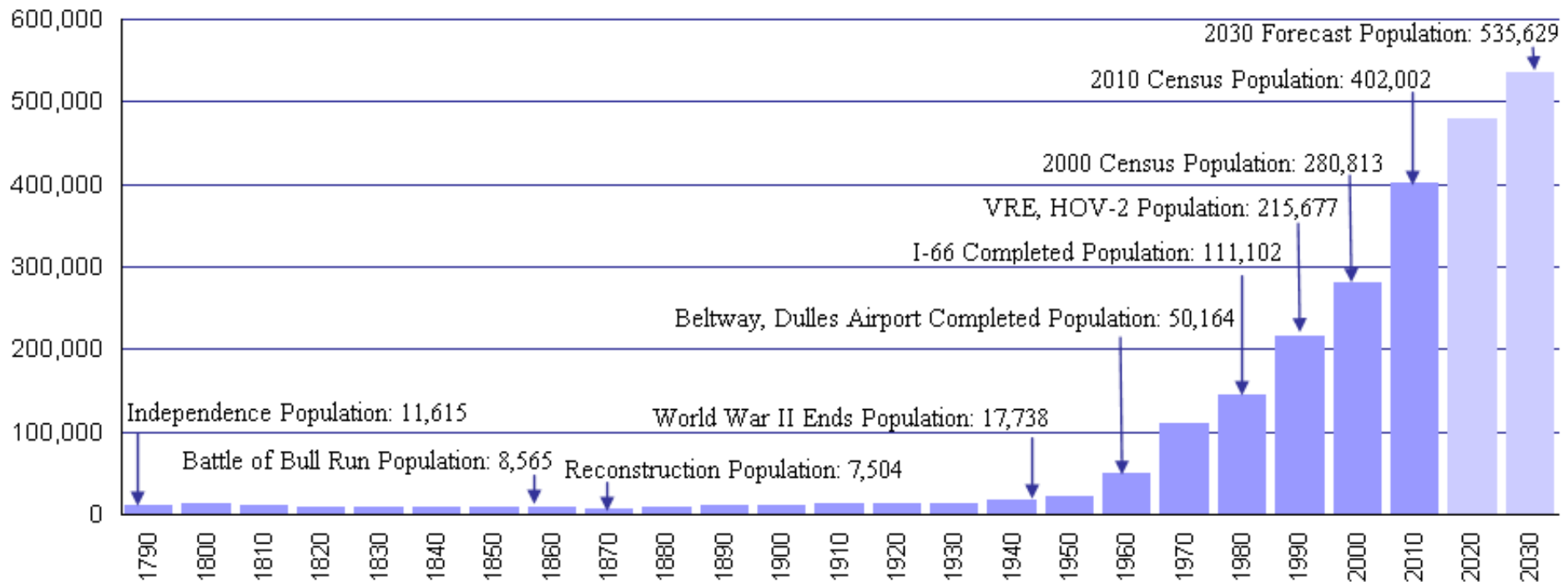




- Population – 469,236
 - 67.1% total growth since 2000
 - Diverse community
- Households with children – 40.2%
 - 88,617 school children
 - 10 Year Growth = 12%
- Median household income
 - \$107,132
- Adults with a college degree – 44.3%
- Labor force – 239,006
 - At-place employment – 123,935
 - Unemployment rate – 4.8%

Prince William Over Time

Population of Prince William County 1790 - 2030





PRINCE WILLIAM
COUNTY

Demographics

2021



Current Population Estimates

- ❑ 347.33 square miles
- ❑ 1,351 people per square mile

Total Population:	469,236	
Housing Units:	158,015	
1 Unit, Detached:	85,924	54.4%
1 Unit, Attached:	40,587	25.7%
Multi-unit:	31,504	19.9%
Households:	151,090	

Comparative Demographics

	Prince William County %	D.C. Metro* %	Virginia %	United States %
Total population (U.S. Census Bureau)	469,236	6,196,585	8,454,463	324,697,795
Male	50.0	48.9	49.2	49.2
Female	50.0	51.1	50.8	50.8
Median age (years)	35.2	37.0	38.2	38.1
Under 5 years	7.4	6.5	6.0	6.1
Under 18 years	27.3	23.0	22.1	22.6
25 to 34 years	13.6	15.0	13.9	13.9
65 years and over	9.5	12.7	15.0	15.6
Not Hispanic or Latino				
White alone	42.9	45.5	61.8	60.7
Black or African American alone	20.3	24.8	18.8	12.3
American Indian and Alaska Native alone	0.3	0.2	0.2	0.7
Asian alone	8.3	10.0	6.3	5.5
Native Hawaiian and Other Pacific Islander alone	0.1	0.1	0.1	0.2
Some other race alone	0.3	0.4	0.3	0.2
Two or more races	4.3	3.3	3.1	2.4
Hispanic or Latino (of any race)	23.5	15.8	9.4	18.0

Comparative Demographics

	Prince William County %	D.C. Metro* %	Virginia %	United States %
Housing Units				
1-unit, detached	54.4	46.3	61.6	61.7
1-unit, attached	25.7	19.5	11.0	5.9
2 or more units	19.9	33.6	22.3	26.3
Owner-occupied households	73.3	63.6	66.3	64.0
Renter-occupied households	26.7	36.4	33.7	36.0
Median rooms	7.0	6.1	6.0	5.5
Median value (dollars)	\$382,400	\$424,000	\$273,100	\$217,500
Commuting				
Car, truck, or van -- drove alone	75.3	65.8	77.0	76.3
Car, truck, or van -- carpooled	11.5	9.3	9.2	9.0
Public transportation (excluding taxicab)	4.9	13.4	4.4	5.0
Mean travel time to work (minutes)	40.0	35.0	28.7	26.9
Poverty & Income				
All people	6.6	7.8	10.6	13.4
Under 18 years	9.0	9.9	13.9	18.5
Median household income (dollars)	\$107,132	\$103,751	\$74,222	\$62,843

U.S. Census American Community Survey (ACS) 2015-2019 5-Year Estimates; GIS Division

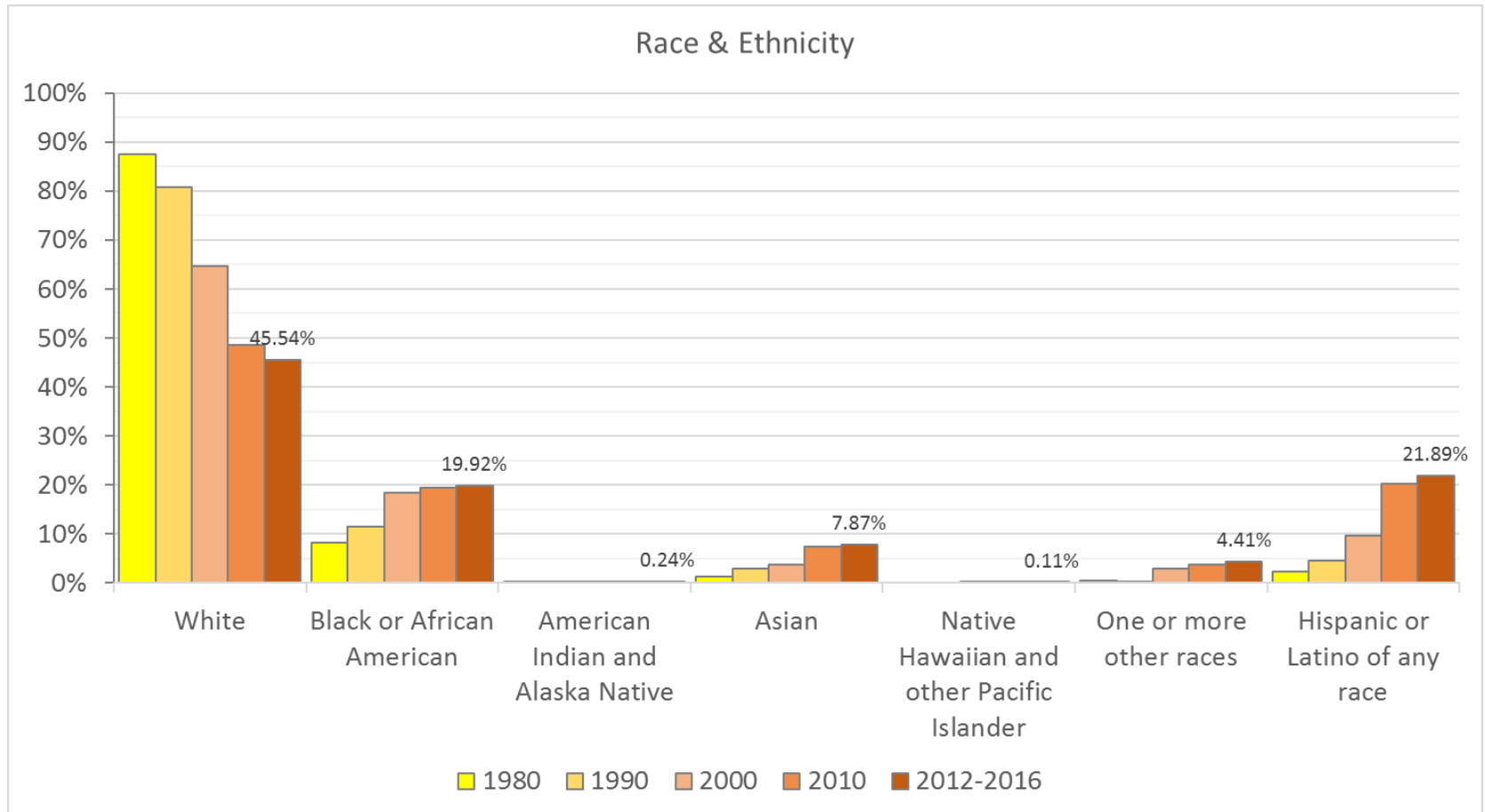
Median Household Income in U.S. Counties and Equivalents

2015-2019 American Community Survey (ACS) 5-Year Estimates

U.S. Census American Community Survey (ACS) 2015-2019 5-Year Estimates.

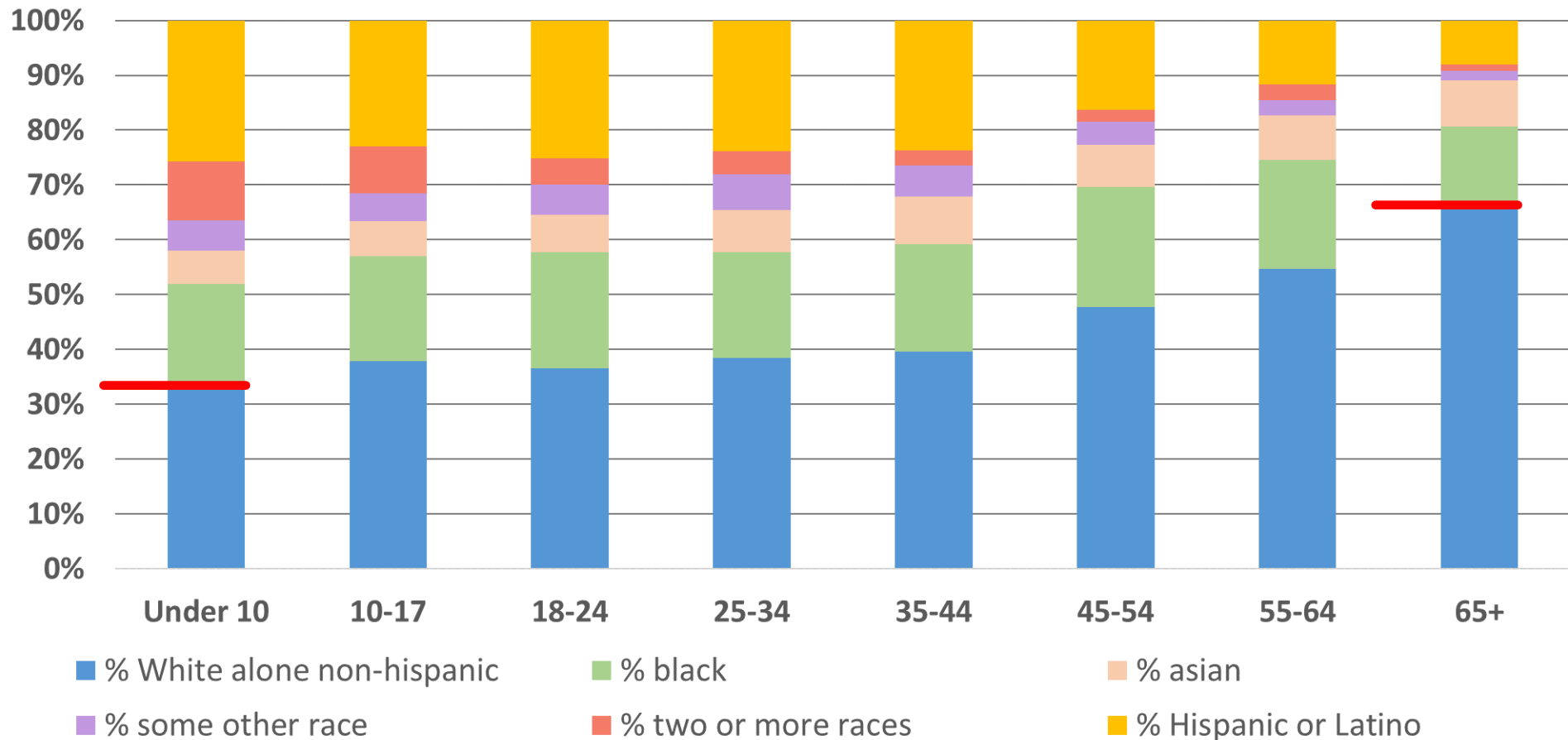
1	Loudoun County, Virginia	\$142,299
2	Falls Church City, Virginia	\$127,610
3	Fairfax County, Virginia	\$124,831
4	Santa Clara County, California	\$124,055
5	San Mateo County, California	\$122,641
6	Los Alamos County, New Mexico	\$121,324
7	Howard County, Maryland	\$121,160
8	Arlington County, Virginia	\$120,071
9	Douglas County, Colorado	\$119,730
10	Fairfax City, Virginia	\$116,979
11	Nassau County, New York	\$116,100
12	Morris County, New Jersey	\$115,527
13	Hunterdon County, New Jersey	\$115,379
14	Marin County, California	\$115,246
15	Somerset County, New Jersey	\$113,611
16	Williamson County, Tennessee	\$112,962
17	San Francisco County, California	\$112,449
18	Stafford County, Virginia	\$111,108
19	Calvert County, Maryland	\$109,313
20	Montgomery County, Maryland	\$108,820
21	Nantucket County, Massachusetts	\$107,717
22	Forsyth County, Georgia	\$107,218
23	Prince William County, Virginia	\$107,132
24	Delaware County, Ohio	\$106,908
25	Putnam County, New York	\$104,486

Race & Ethnicity Trends



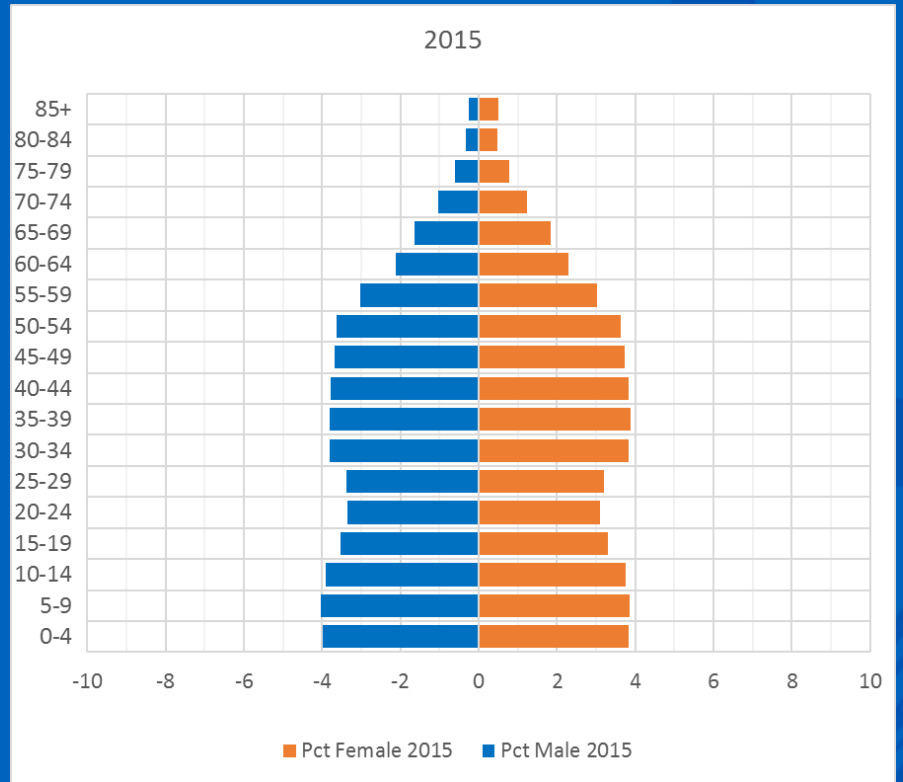
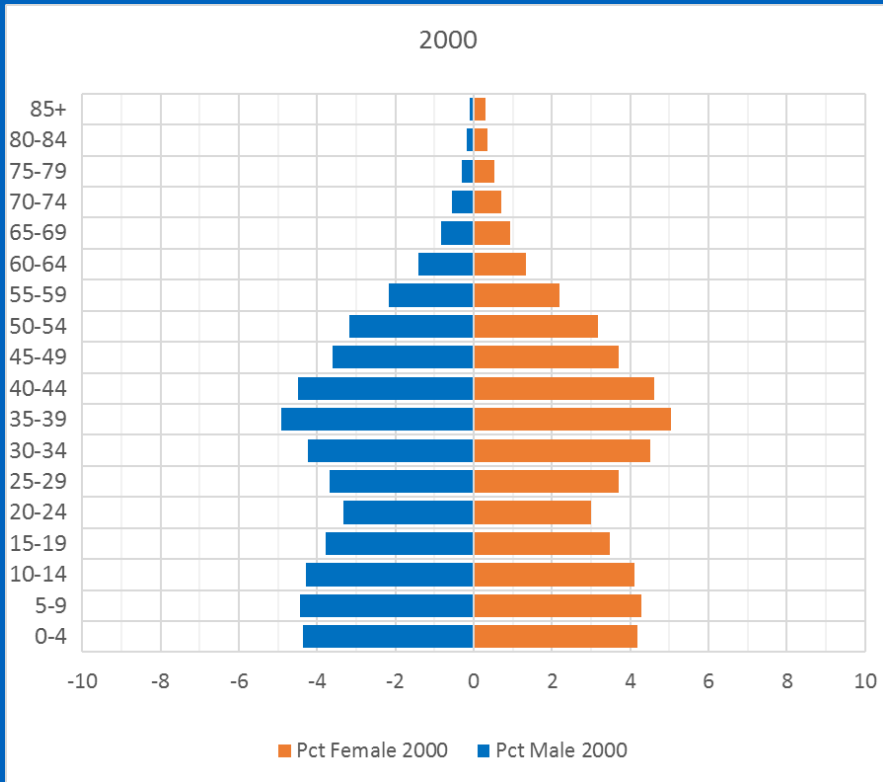
U.S. Census 1980; 1990; 2000; 2010; U.S. Census American Community Survey (ACS) 2012-2016 5-Year Estimates. Minnesota Population Center. National Historical Geographic Information System: University of Minnesota.

Age by Race and Ethnicity



U.S. Census American Community Survey (ACS) 2012-2016 5-Year Estimates.

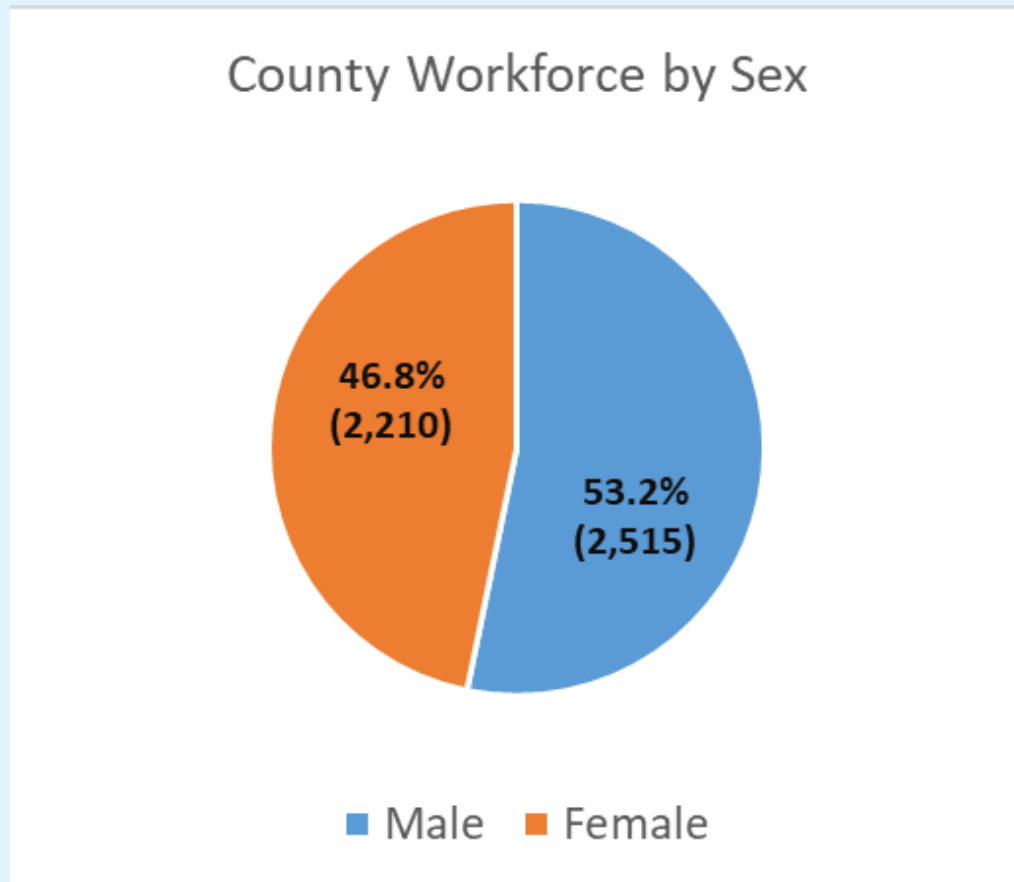
Age Composition



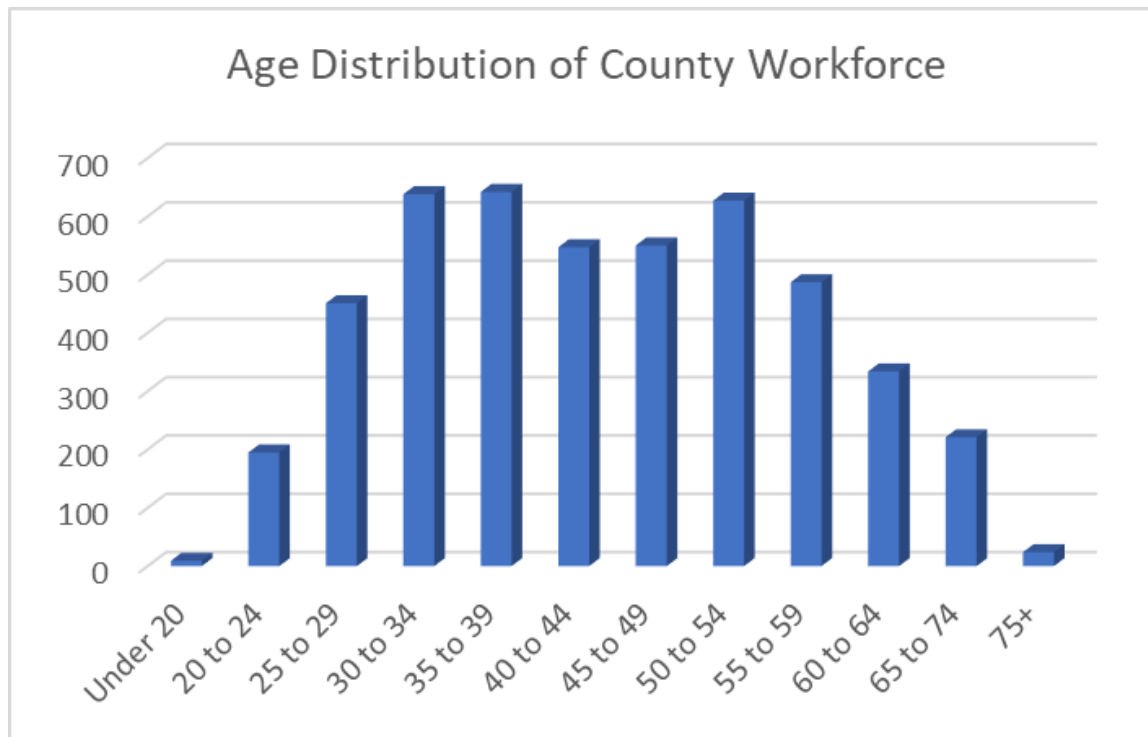
Source: Center for Disease Control and Prevention. CDC Wonder: Compressed Mortality File

Workforce Stats: Sex

Total: 4,725



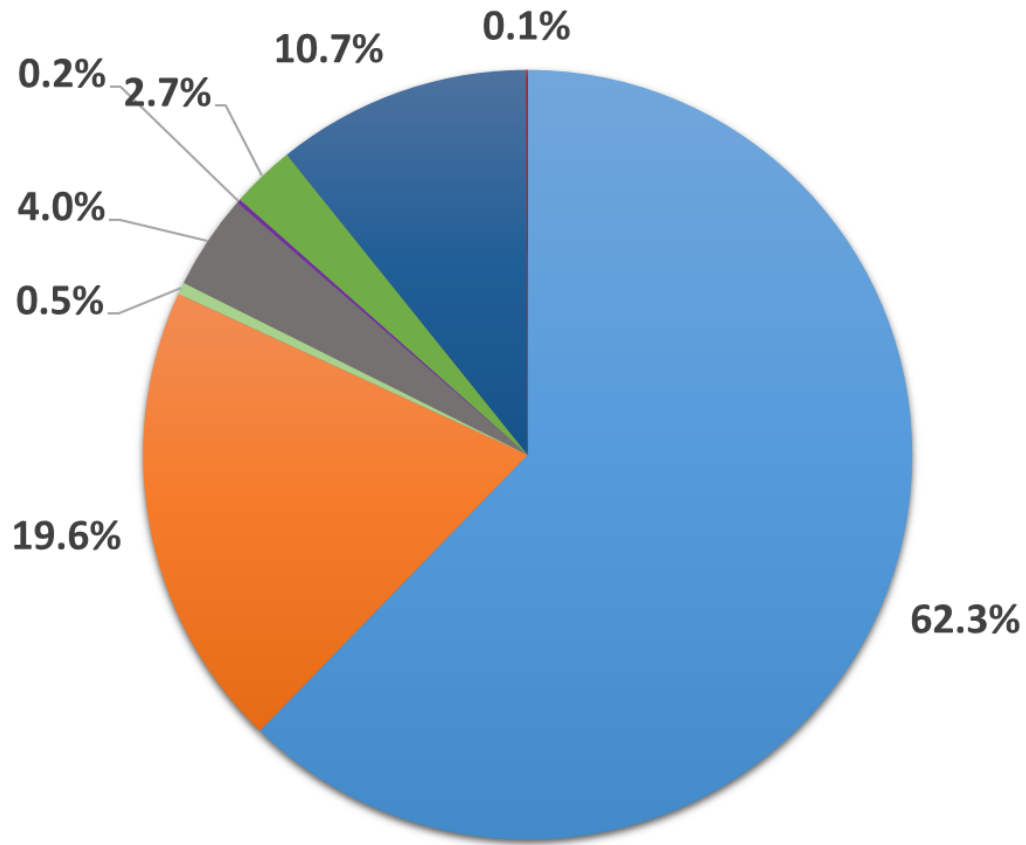
Workforce Stats: Age



Percentages

Under 20	0.2%
20 to 24	4.1%
25 to 29	9.5%
30 to 34	13.5%
35 to 39	13.6%
40 to 44	11.6%
45 to 49	11.6%
50 to 54	13.3%
55 to 59	10.3%
60 to 64	7.1%
65 to 74	4.7%
75+	0.5%

Racial and Ethnic Composition of County Workforce



White alone

American Indian and Alaska Native alone

Native Hawaiian and Other Pacific Islander alone

Hispanic or Latino origin (of any race)

Black or African American alone

Asian alone

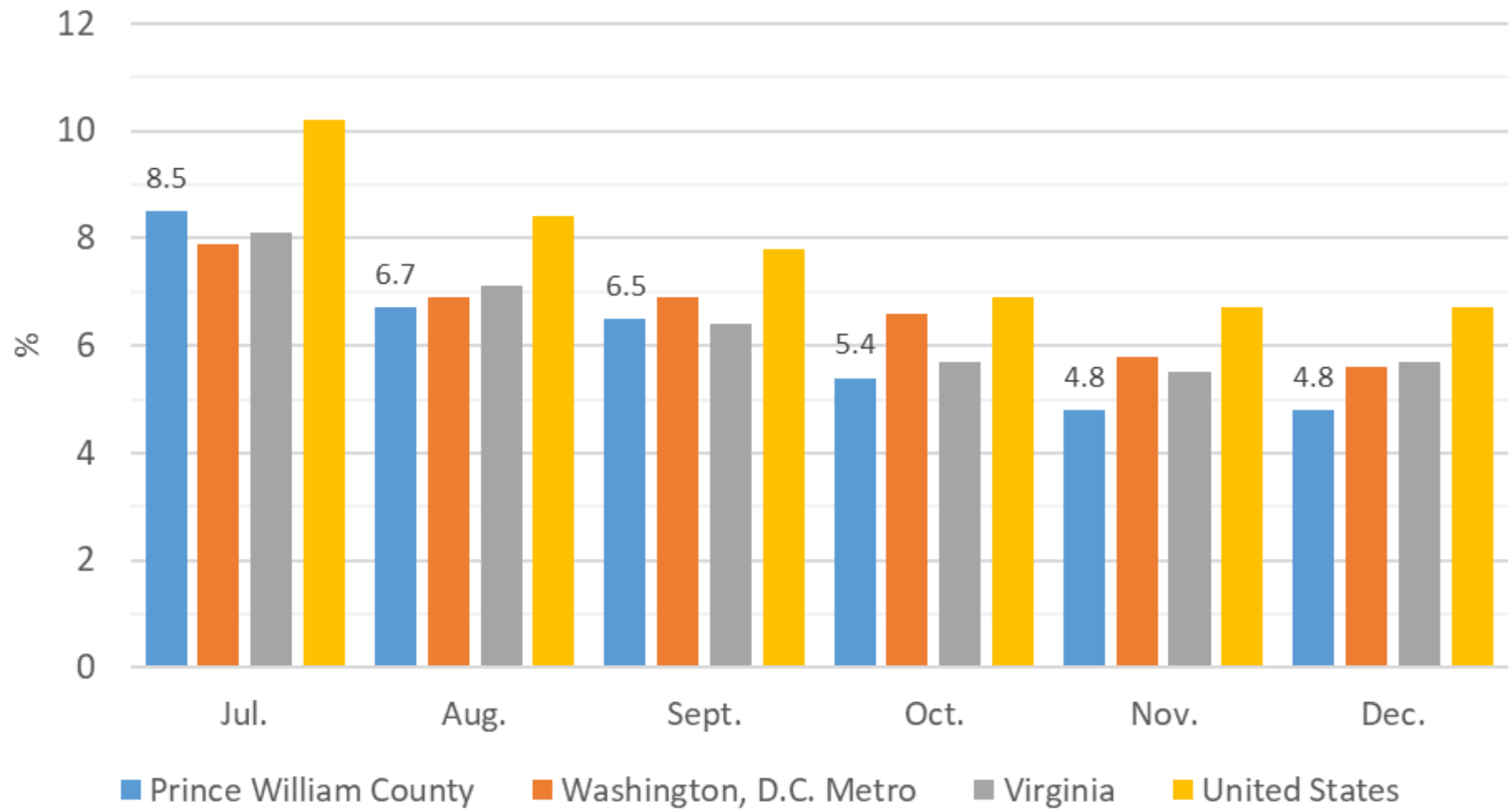
Two or more races

No Data on File

Backup Slides

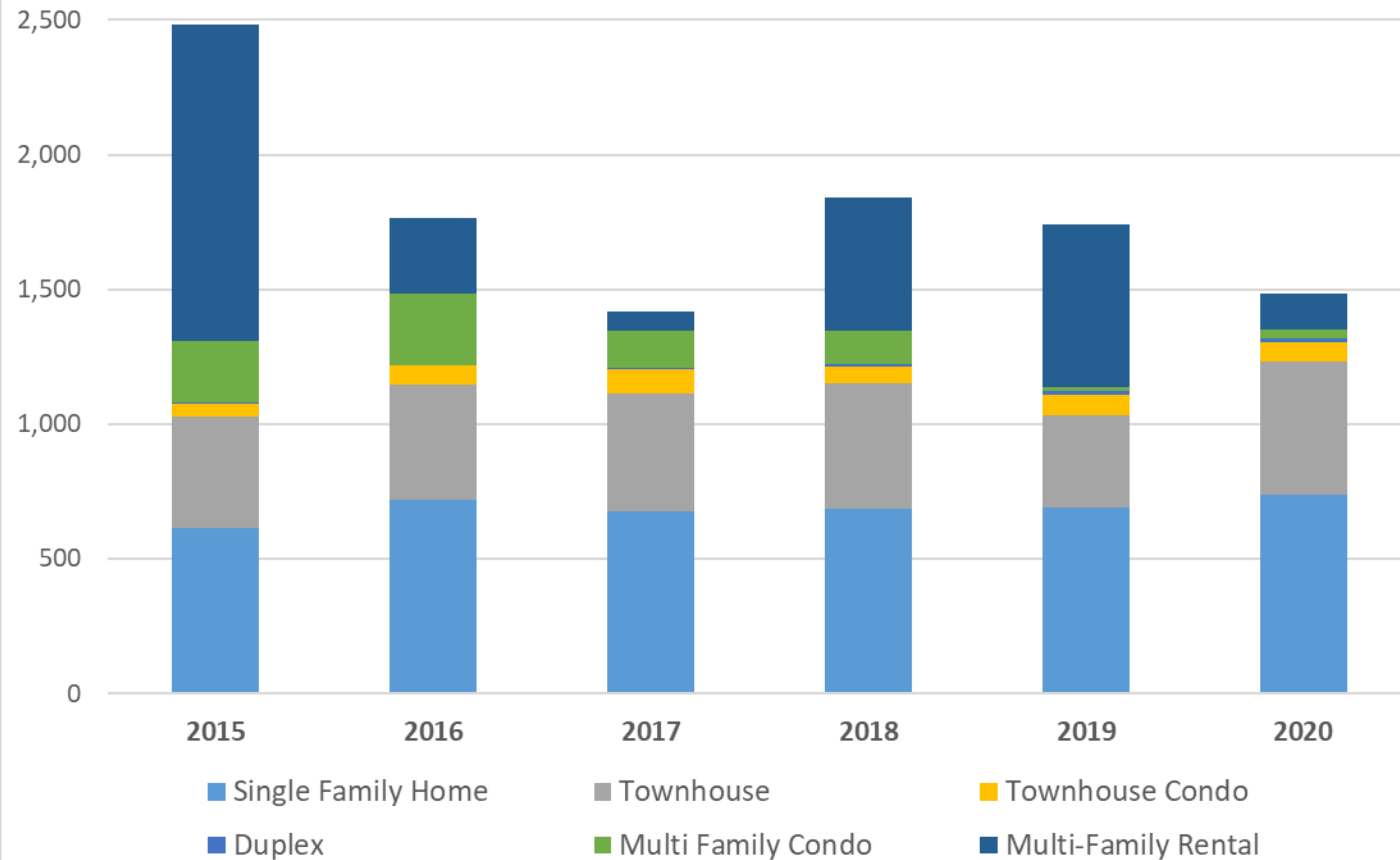


Comparative Unemployment Rates: 2020



Bureau of Labor Statistics: Local Area Unemployment Statistics (LAUS)

Residential Occupancy Units by Year and Type

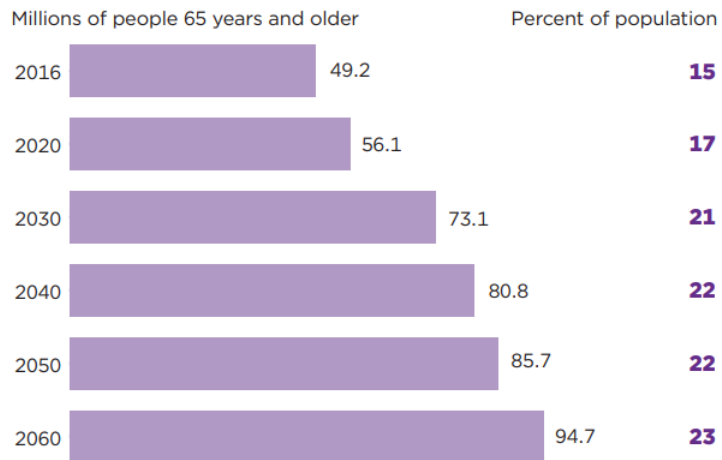


Energov: 2014-2020 residential occupancy permits and units

Aging Nation

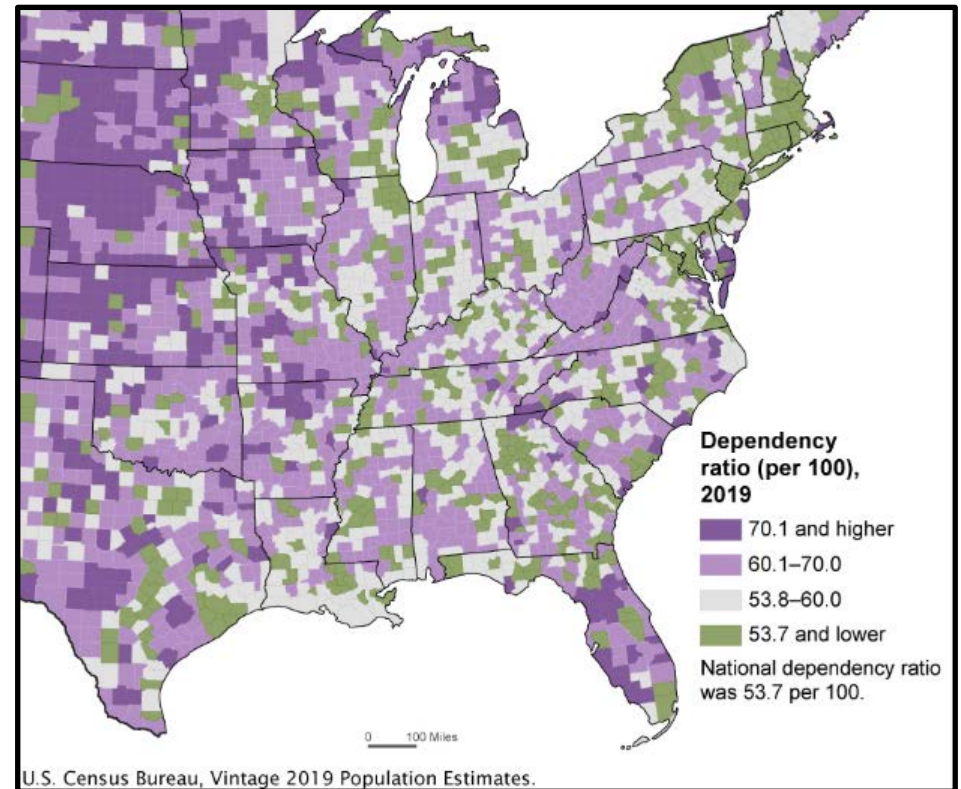
Figure 1.
Projections of the Older Adult Population: 2020 to 2060

By 2060, nearly one in four Americans is projected to be an older adult.



Age 65+ Draft
Projections for
Prince William
County >>
*2020 value is based
on a linear projection.

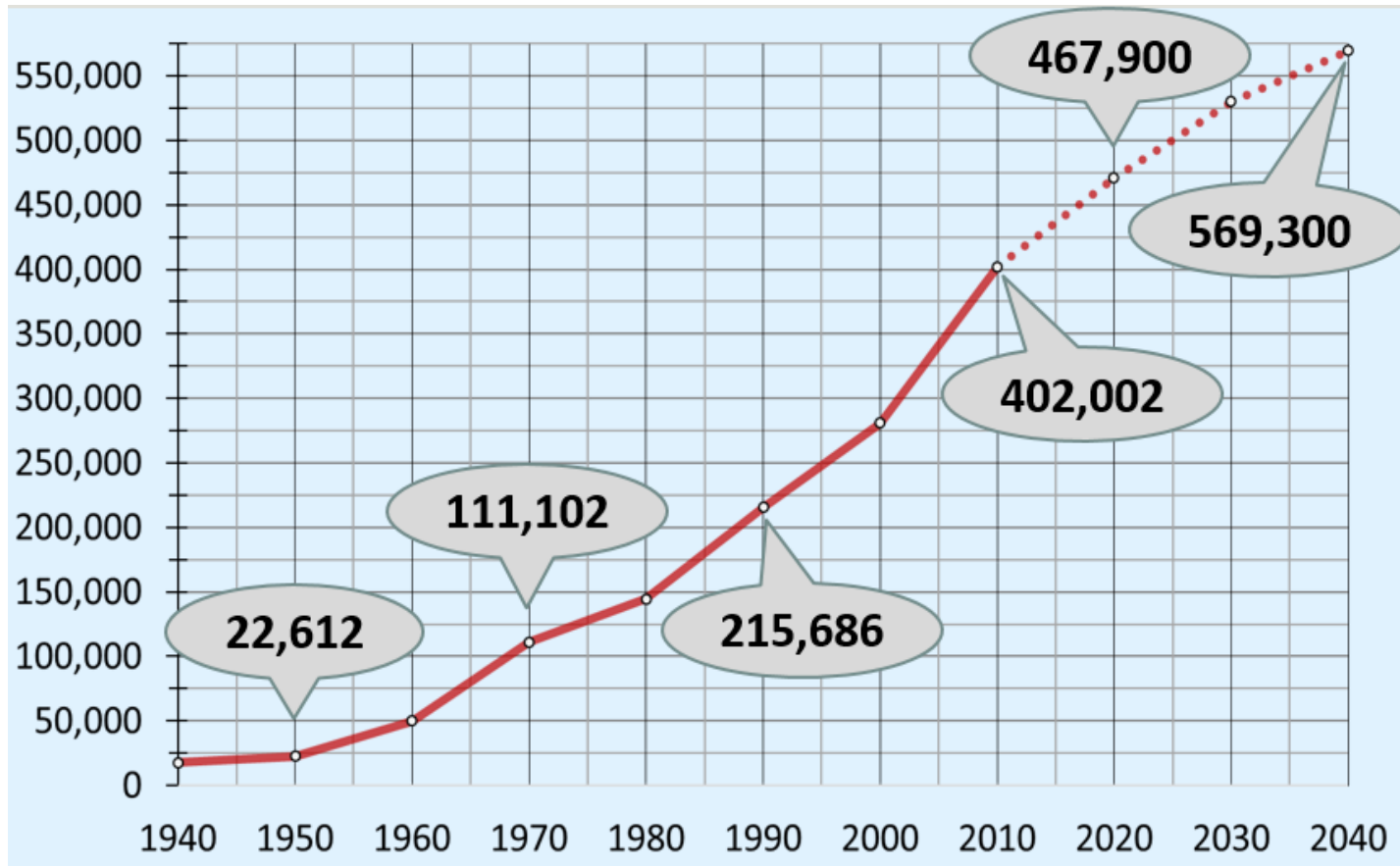
	Pop	Percent
2015	39,436	8.7%
2020*	53,883	11.4%
2025	67,951	13.9%
2030	88,023	17.5%



Note: A lower ratio means there are fewer dependent-age people relative to the size of the working-age population. In contrast, a higher ratio indicates there are more dependent-age people relative to those of working age.

U.S. Census Bureau
<https://www.census.gov/library/stories/2020/06/working-age-population-not-keeping-pace-with-growth-in-older-americans.html>

Population Growth



U.S. Census Bureau; Minnesota Population Center. National Historical Geographic Information System: University of Minnesota; Metropolitan Washington Council of Governments Round 9.1; Washington Post.